

**SURVEYOR'S STATEMENT**

THIS MAP CORRECTLY REPRESENTS A SURVEY MADE BY ME OR UNDER MY DIRECTION IN CONFORMANCE WITH THE REQUIREMENTS OF THE PROFESSIONAL LAND SURVEYOR'S ACT AT THE REQUEST OF DBB HOLDINGS, INC. IN MAY OF 2016

*Cory J. Kleine*  
 CORY J. KLEINE  
 P.L.S. No. 8667  
 DATE 11/17/16

**CURVE TABLE**

CURVE	DELTA	RADIUS	LENGTH	CHORD BEARING	CHORD
C1	Δ=020°54'26"	1440.50'	525.64'	N12°02'43"W	522.72'
C2	Δ=017°22'39"	2090.72'	634.11'	N13°48'36"W	631.68'

**NOTES**

(1) THIS RECORD OF SURVEY HAS BEEN PREPARED TO SHOW THE BOUNDARY MONUMENTS SET DURING THE PERFORMANCE OF A FIELD SURVEY IN ACCORDANCE WITH SECTION 8762(b)(5) OF THE PROFESSIONAL LAND SURVEYORS ACT.

THE EASTERLY LINE OF STATE HIGHWAY 89 IS SHOWN PER THE CALTRANS STATE HIGHWAY MONUMENTATION MAPS DATED OCTOBER 30, 1975, ROTATED TO MAP BASIS.

**BASIS OF BEARING**

N89°56'00"E - THE NORTH LINE OF THE NORTHWEST ONE-QUARTER (NW1/4) OF SECTION 5, T.10N., R.20E., M.D.M. AS SHOWN ON THE DEPENDENT RESURVEY PERFORMED BY THE BUREAU OF LAND MANAGEMENT, APPROVED AUGUST 1, 1962.

**COUNTY SURVEYOR'S STATEMENT**

THIS MAP HAS BEEN EXAMINED IN ACCORDANCE WITH SECTION 8766 OF THE PROFESSIONAL LAND SURVEYOR'S ACT THIS 17<sup>th</sup> DAY OF November, 2016.

*John S. Parrish*  
 JOHN S. PARRISH, P.L.S. No. 5050  
 COUNTY SURVEYOR  
 COUNTY OF ALPINE, CALIFORNIA

**COUNTY RECORDER'S STATEMENT**

FILED THIS 16<sup>th</sup> DAY OF December, 2016, AT 1:59 PM IN BOOK 8 OF RECORD OF SURVEYS AT PAGE 5, AT THE REQUEST OF CORY J. KLEINE.

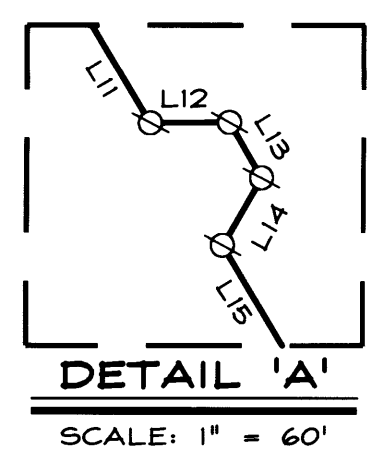
DOCUMENT No. \_\_\_\_\_

*Granette Millar, Deputy*  
 DONALD O'CONNOR  
 COUNTY ASSESSOR/RECORDER  
 COUNTY OF ALPINE, CALIFORNIA

SCALE: 1" = 800' SHEET 1 OF 1

**LINE TABLE**

LINE	BEARING	LENGTH
L1	N27°30'19"W	309.50'
L2	N22°30'04"W	30.01'
L3	N18°32'19"W	391.08'
L4	N33°48'31"W	255.04'
L5	N12°17'41"W	254.11'
L6	N25°06'06"W	550.76'
L7	N22°29'56"W	1343.87'
L8	N01°27'39"E	1205.13'
L9	N08°55'55"W	287.62'
L10	N20°23'29"W	287.62'
L11	N30°49'38"W	223.18'
L12	S89°35'36"W	24.65'
L13	N30°24'24"W	20.01'
L14	N29°35'36"E	24.27'
L15	N30°49'38"W	532.76'



**R O Anderson**  
 WWW.ROANDERSON.COM

NEVADA: 1603 Esmeralda Ave, Primm, NV 89423, p 775.782.2322, f 775.782.7084  
 CALIFORNIA: 595 Tahoe Keys Blvd, Suite A-2, South Lake Tahoe, CA 96150, p 530.600.1660, f 775.782.7084

**RECORD OF SURVEY**  
 OF  
 A PORTION OF SECTIONS 5 & 6,  
 T.10N., R.20E., M.D.M.  
 COUNTY OF ALPINE,  
 CALIFORNIA

2365-001ROS.dwg 08/18/16

- LEGEND**
- SECTION CORNER, FOUND BLM BRASS CAP, 1960 UNLESS OTHERWISE NOTED
  - 1/4 CORNER, FOUND BLM BRASS CAP, 1960 UNLESS OTHERWISE NOTED
  - 1/16 CORNER, FOUND BLM BRASS CAP, 1960 UNLESS OTHERWISE NOTED
  - FOUND POSITION AS INDICATED
  - SET 5/8" REBAR & PLASTIC CAP PLS 8667
  - DIMENSION POINT, NOTHING FOUND OR SET
  - (C) CALCULATED POSITION
  - (M) MEASURED POSITION
  - (10) SUBDIVISION LOT
- REFERENCE DOCUMENTS**
- (R1) DEPENDENT RESURVEY OF T.10N., R.20E., M.D.M. & ASSOCIATED FIELD NOTES PERFORMED BY THE BUREAU OF LAND MANAGEMENT, APPROVED AUGUST 1, 1962
  - (R2) PARCEL MAP FOR APLAND, BAGINSKI & FULLER FILED FOR RECORD AUGUST 11, 1998 IN BOOK 4 OF MAPS, AT PAGE 121
  - (R3) RECORD OF SURVEY FILED FOR RECORD FEBRUARY 10, 1988 IN BOOK 3 OF RECORDS OF SURVEYS AT PAGES 31-33
  - (R4) RECORD OF SURVEY OF HUMBOLDT-TOIYABE NATIONAL FOREST BOUNDARIES FILED FOR RECORD JULY 30, 2012 IN BOOK 7 AT PAGES 58-69
  - (R5) RECORD OF SURVEY FOR HARRY HAWKINS TO BOY SCOUTS OF AMERICA FILED FOR RECORD JANUARY 27, 1969 IN BOOK 1 OF MAPS, AT PAGE 25

EXISTING ASSESSOR'S PARCEL NO.'S 02-230-008, -046, -047 & -051